

ATTACHMENT A

IN THE MATTER OF: PACIFIC FUNCTIONAL FLUIDS EPA DOCKET NO. EPCRA-10-0211-0014 SUPPLEMENTAL ENVIRONMENTAL PROJECT (SEP)

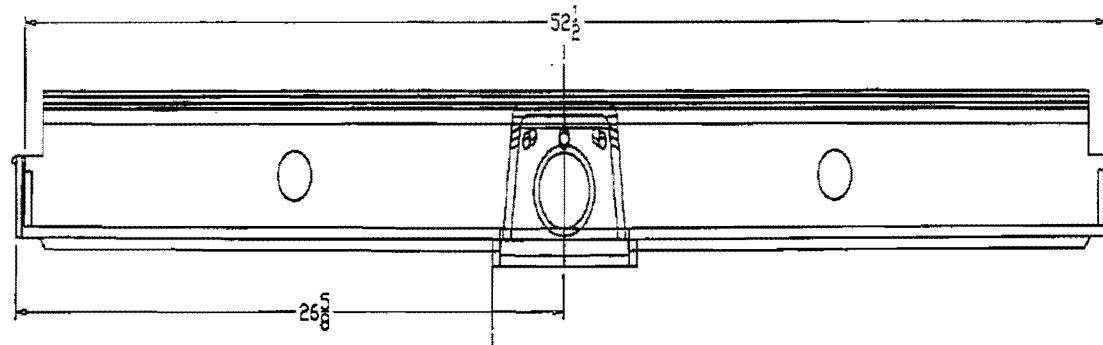
Respondent shall purchase and install a new secondary containment system for all rail car slots. This system is designed to capture and channel all spills, including catastrophic releases, by an interlocking system of Polyethylene pans with grates and connecting pipes to one of Pacific Functional Fluid's (PFF) designated receiving tanks, allowing containment and recovery of a "worst case" release. The ability to contain a release from an entire rail car would prevent significant damage to the environment and property and provide a high level of safety for emergency response personnel. The Parties agree that this SEP is intended to secure significant environmental benefits by reducing the risk from a release of hazardous chemicals into the environment.

Respondent will complete this SEP within 90 days of the Effective Date of the Consent Agreement and Final Order. Respondent will spend at least \$31,261 on this SEP.

The Secondary Containment System

Description	Quantity	Unit Cost	Total
Center TrackPan with Grates	41	\$ 420.00	\$17,220.00
Bulkhead fittings for below grade piping	6	\$ 34.00	\$ 204.00
Installation			\$ 9,210.00
Shipping and Handling			\$ 4,200.00
Misc. Supplies (fittings, pipe cement, etc.)			<u>\$ 427.90</u>
Total estimated cost:			\$31,261.90

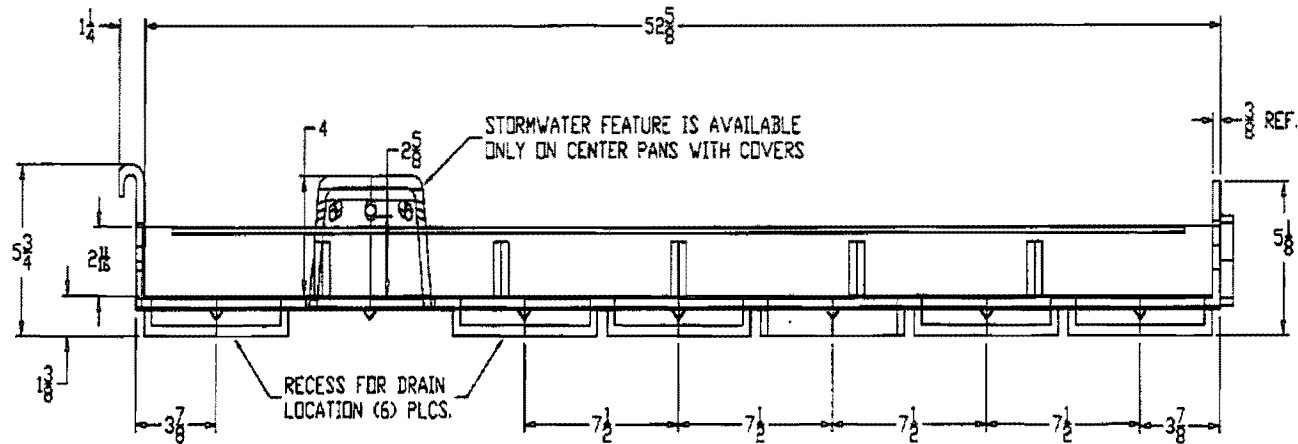
The following pages provide a more detailed description of the project.



STANDARD CENTER PAN

FRONT VIEW

(Part# 9566)



STANDARD CENTER PAN

SIDE VIEW

(Part# 9566)

ALL SYSTEM DIMENSIONS ±1%

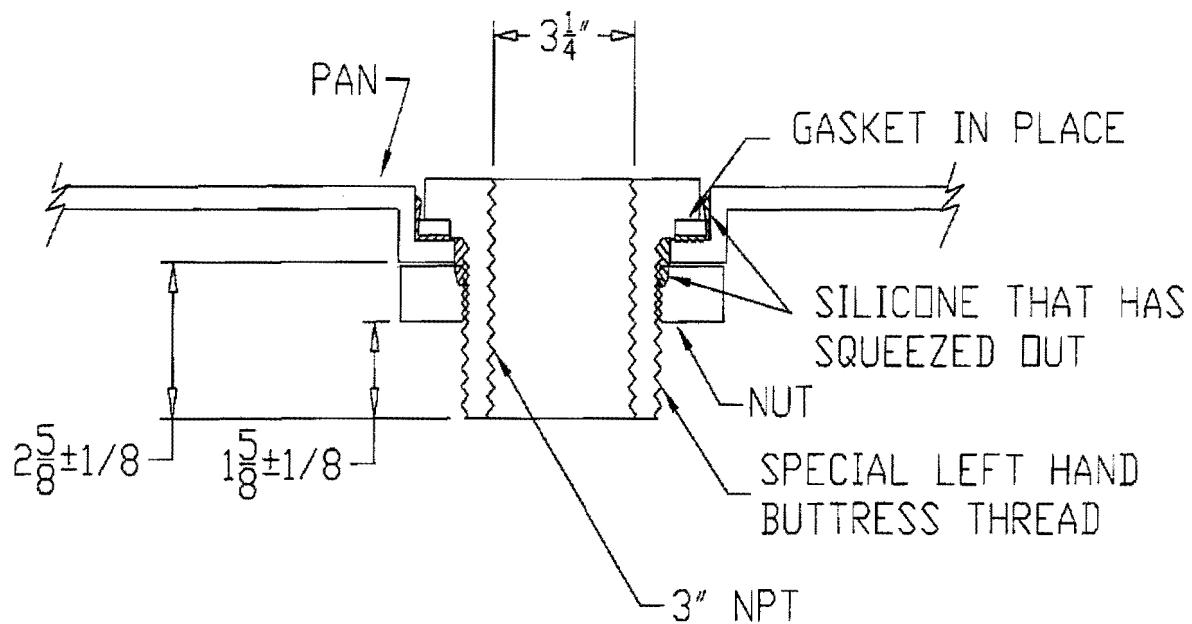
CONFIDENTIAL

This information and drawing is confidential and the property of UltraTech International, Inc. NO COPIES are to be made without express written permission from UltraTech International, Inc.

UltraTech International, Inc.

*** INSIDE MOLD DIMENSIONS ***

A. ADD DIMS		PKD 5/11/11		SCALE: NONE		DESIGNED BY: L. N. NORSE		ULTRA-TRACK PAN		SHEET NO.	
ADD DIMS AND CALLOUTS		PKD 6/22/11		PROJ: NONE		DRAWN BY: A. HOFFS		CENTER PAN DIMENSIONS		1 of 2	
REV. ARRANGEMENT		PKD 6/11/11		PROJ: NONE		CHECKED BY: L. N. NORSE		c) Showing hidden lines			
INITIAL ISSUE		DSP 8/1/11		FILE: none standard system.dwg		11340 Davis Green Ct. Jacksonville, Florida 32216		For # 8044 262-1323 Email: paul@ultratechintl.com			
CHG: 1/1/11		PREP BY: [blank]		DATE: [blank]		APPROVED: [blank]					



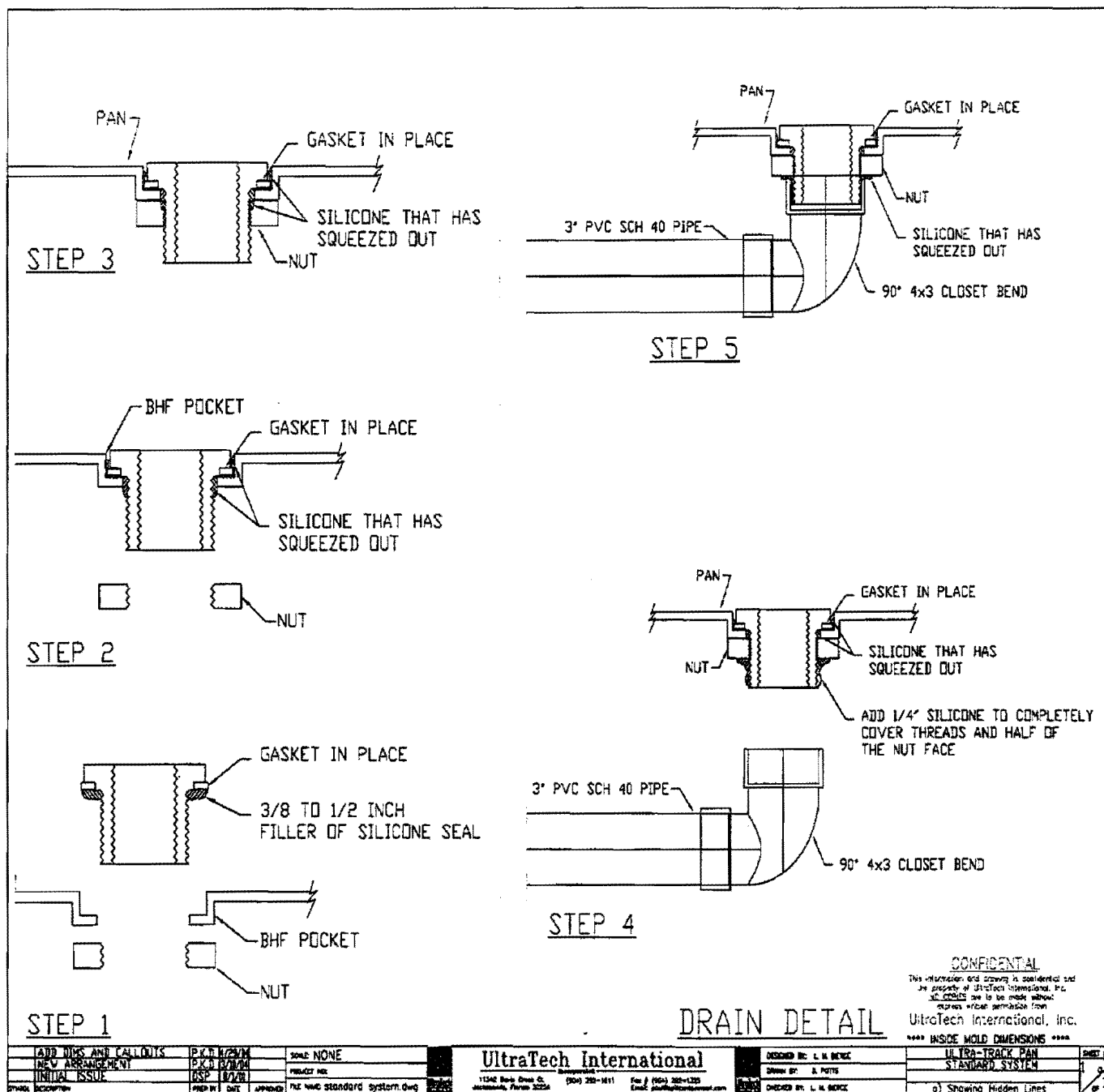
DRAIN DETAIL

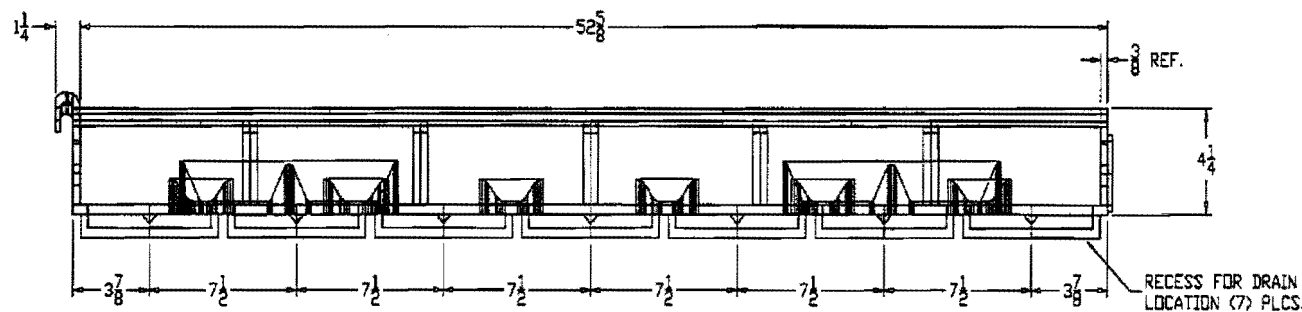
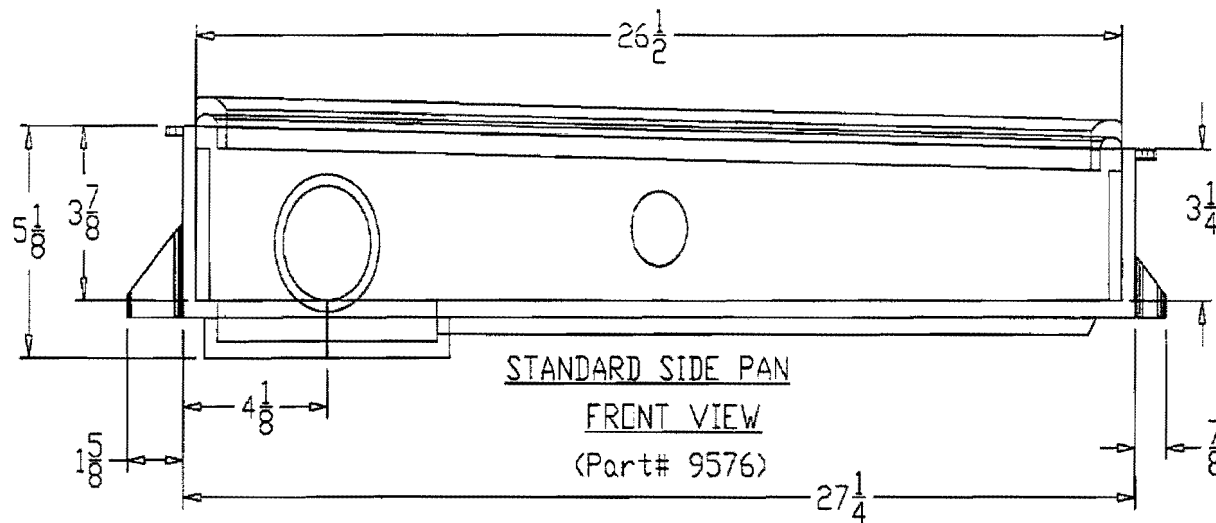
CONFIDENTIAL

This information and drawing is confidential and the property of UltraTech International, Inc. All drawings are to be made without exposure without permission from UltraTech International, Inc.

**** INSIDE MOLD DIMENSIONS ****

ADD DIMS AND CALLOUTS	PK B 1/2/08	SCALE: NONE	UltraTech International	DESIGNED BY: L. H. BONE	ULTRA-TRACK PAN	SHEET NO.
REV. ARRANGEMENT	PK B 1/2/08	PROJECT NO.	11542 Bore Drain G.	DRAWN BY: L. H. BONE	STANDARD SYSTEM	1
1 INITIAL ISSUE	NSP 8/1/08	FILE NAME: standard_system.dwg	11542 Bore Drain G.	CHECKED BY: L. H. BONE	of Showing Hidden Lines	1
Drawn: H. BONE	Prep: J. BONE	Approved:	11542 Bore Drain G.			
			11542 Bore Drain G.			





ALL SYSTEM DIMENSIONS $\pm 1\%$

CONFIDENTIAL

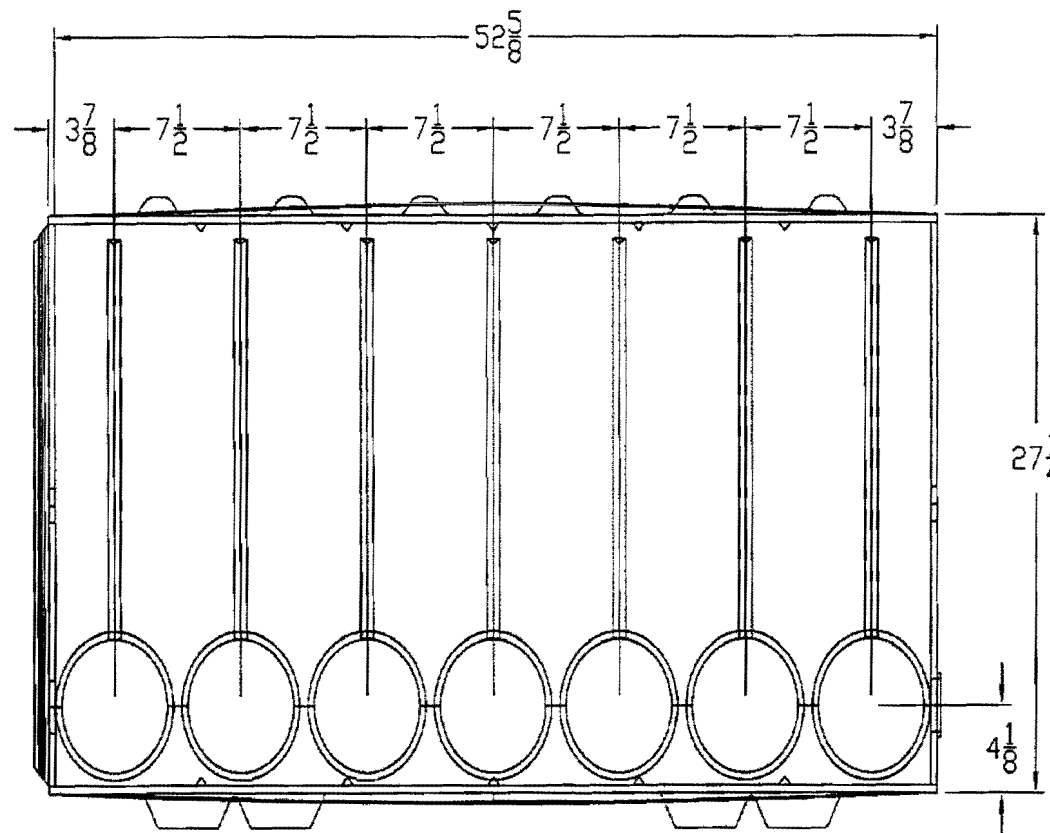
This information and drawing is confidential and the property of UltraTech International, Inc. NO COPIES are to be made without express written permission from UltraTech International, Inc.

**** INSIDE MOLD DIMENSIONS ****

A. ADD DIMS			P.K.D. 5/10/11					**** INSIDE MOLD DIMENSIONS ****			
ADD DIMS AND CALLOUTS			P.K.D. 11/21/11		SEND: NONE		DESIGNED BY: L. H. BORCE			ULTRA-TRACK PAN	SHEET
REV. ARRANGEMENT			P.K.D. 11/21/11		PROJECT NO.		DRAWN BY: E. PATE			SIDE PAN DIMENSIONS	
INITIAL ISSUE			TSF 11/21/11		FILE NAME: Standard System.dwg		CHECKED BY: L. H. BORCE			a) Showing Hidden Lines	
Rev'd: 11/21/11			11/21/11		11/21/11		11/21/11			11/21/11	

UltraTech International

1540 West Green St. Jacksonville, Florida 32206 (904) 382-1111 Fax: (904) 382-1225 Email: jacob@ultratechintl.com



STANDARD SIDE PAN
PLAN VIEW
(Part# 9576)

ALL SYSTEM DIMENSIONS $\pm 1\%$

CONFIDENTIAL

This information and drawing is confidential and the property of UltraTech International, Inc. All rights are to be made without express written permission from

UltraTech International, Inc.

**** INSIDE MOLD DIMENSIONS ****

A. ADD DIMS			P.K.D. 5/11/04				**** INSIDE MOLD DIMENSIONS ****		
ADD DIMS AND CALLOUTS			P.K.D. 4/29/04	SOLID: NONE			DESIGNED BY: L. H. BORD		
NEW ARRANGEMENT			P.K.D. 3/18/04	PROJECT NO:			ULTRA-TRACK PAN		
INITIAL ISSUE			OSP 8/1/04	FILE NAME: Standard System.dwg			DRAWN BY: S. FOTS		
CHANG. DESCRIPTION			PROJ. NO. DATE APPROVED	11342 Santa Rosa, CA (949) 292-1411 Fax: (949) 292-1223			C:\pds\pds\Standard System.dwg		
				UltraTech International			CHECKED BY: L. H. BORD		
							2 of 2		
							a) Showing Hidden Lines		